

# Kittitas County Voluntary Stewardship Program



## **Watershed Group Meeting**

March 26, 2021 10AM to Noon

Armory, Kittitas Valley Event Center

*Or virtually via Zoom platform at:*

<https://zoom.us/j/99185090749?pwd=NEdZblpBb3RxVnIJRmRTekVhdUx5UT09>

Meeting ID: 991 8509 0749 Passcode: 410131

Dial in: +1 253 215 8782 US (Tacoma) or +1 669 900 6833 US (San Jose)

# Review Minutes

- Minutes – November 6, 2020



# VSP Grant Status

- Grant Status
  - Funds expended to date
  - Remaining Funds
- Equipment Purchases
  - Recruitment
- Planting Projects

**Total Contract between KCCD and Kittitas County \$ 238,000.00**

Expenses through 3/1/21		
Travel Description (per diem, mileage)	\$	880.58
Meeting Rooms, Refreshments	\$	1,622.03
Salaries, Benefits, Indirect	\$	83,599.09
Goods & Services (Copying & Printing, Plant Materials)	\$	4,168.38
Equipment	\$	10,605.37
<b>Total</b>	<b>\$</b>	<b>100,875.45</b>

Expected Costs through June 2021		
Salaries, Benefits, Indirect	\$	21,903.40
Meeting Rooms, Refreshments	\$	585.00
Equipment (Drone Subscription)	\$	596.00
ESRI Subscription	\$	1,083.00
Planting Project Costs	\$	9,942.42
<b>Total</b>	<b>\$</b>	<b>34,109.82</b>

Proposed Purchases		
<a href="#">HP DesignJet T650 Large Format Wireless Plotter Printer - 24"</a>	\$	1,862.02
Dell Universal Dock D600, keyboard, mouse, monitor	\$	584.00
<b>Total</b>	<b>\$</b>	<b>2,446.02</b>

**Predicted Remaining Funds \$ 64,319.60**



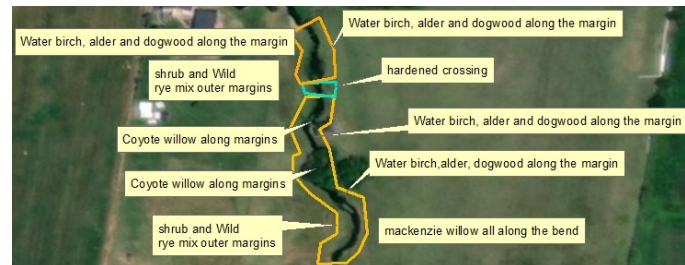
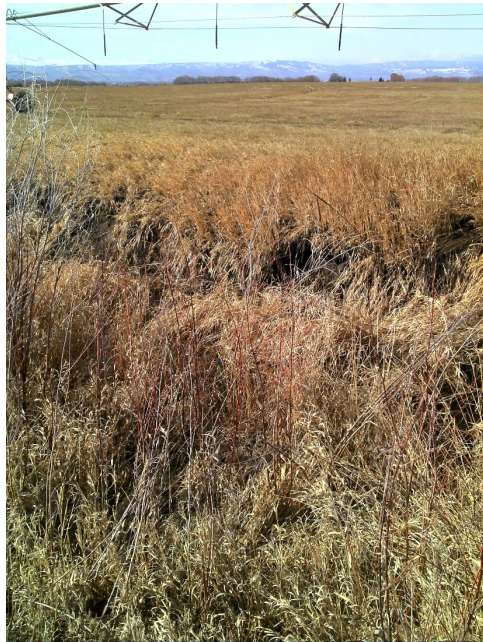
# Financial Assistance

- Individual Producer Opportunities
  - RCPP (EQIP) – 2021 applications heading to contracts now
  - RCPP (CSP) – 2021 Applications accepted now with deadline of April 5, 2021
- USDA Natural Resources Conservation Service's Conservation Stewardship Classic (CSP) - Applications due by March 31, 2021.



# Financial Assistance

- VSP Grant Funds
  - Habitat Improvement Projects
    - Two projects completed
    - Three projects in planning stage



# Reporting Requirements

- Five Year Report Review Process
  - State Technical Panel Recommendation (January)
  - State Advisory Committee Recommendation (March)
  - Approval by Conservation Commission Executive Director (early June)



# Reporting Requirements

- Five Year Report Review
  - State Technical Panel
    - Conservation Commission (Brian Cochrane)
    - WDFW (Mary Huff)
    - Ecology (Rick Mraz/Chelsea Benner)
    - Agriculture (Kelly McClain)



# Reporting Requirements

## ■ State Tech Panel Review

- Based on only information provided in the 5-year report template
- After comments are issued, Counties cannot provide additional information to Tech Panel and Tech Panel will not change their recommendation.
- Kittitas County was first report submitted via the template and was reviewed in December/January





# Reporting Requirements

- State Technical Panel Review Recommendations
  - Conservation Commission – partially agree
  - WDFW – disagree
  - Ecology – partially agree
  - Agriculture – partially agree
- Nearly all reports reviewed so far have received “partially agree” from most members



# Reporting Requirements

- State Technical Panel Review Recommendations
  - Indirect vs direct – how to report?
  - Reporting Levels
    - County vs. Watershed
    - Location



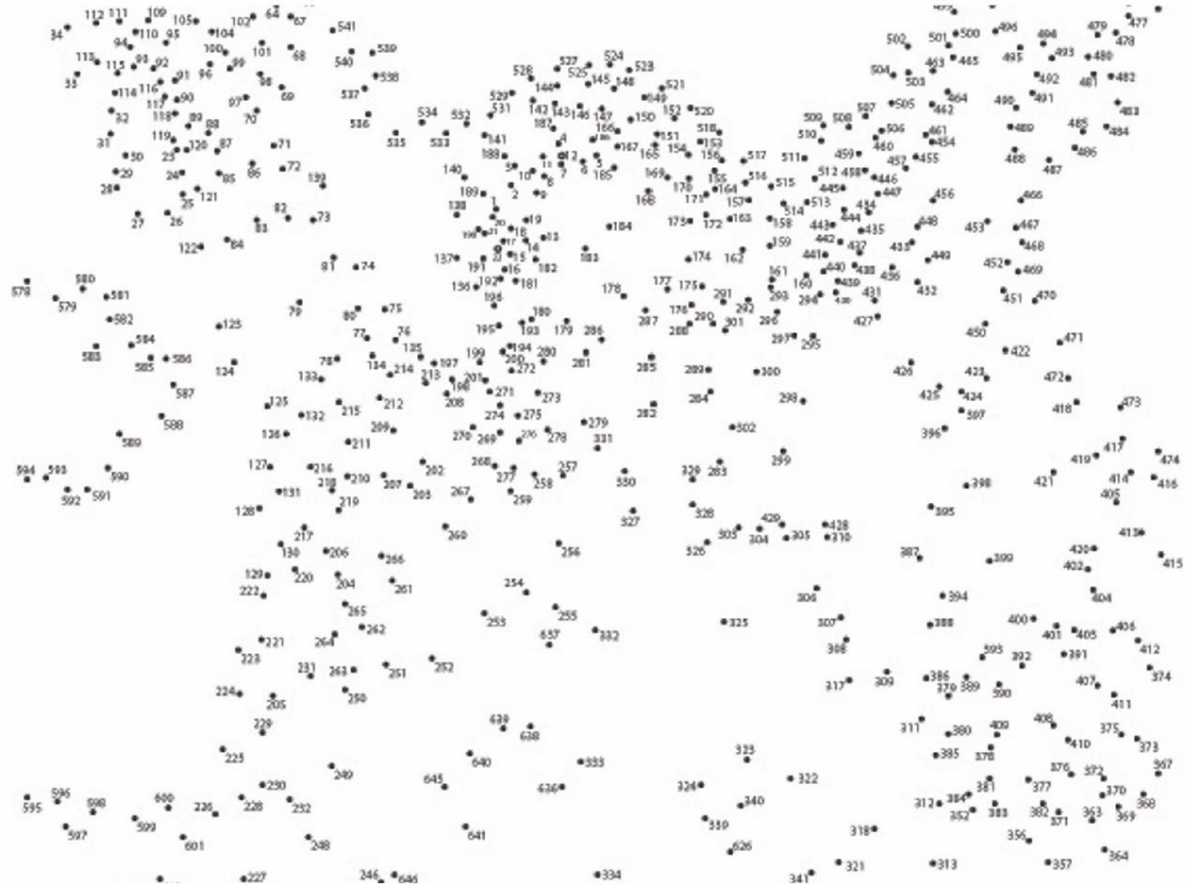
# Reporting Requirements

- State Technical Panel Review Recommendations
  - Wetlands
    - Adaptive Management
  - Geologically Hazardous Areas
    - Adaptive Management



# Reporting Requirements

- Connect the Dots



# Reporting Requirements

- State Technical Panel Review Recommendations
  - Provide additional details
    - Describe NRCS practice specifications
    - Describe KCCD/NRCS planning, implementation and certification processes



# Reporting Requirements

- Provide additional details regarding practice implementation
  - Separate structural and management practices



Type		NRCS Code	Practice Name	2020 Protection Objective	2020 Enhancement Objectives	2011-2016 Reported Data	17-20 Biennial Implementation	Total Implementation to Date (2011 to 2020)	2017	2018	2019	2020	
Indirect Intersects	Water Management	449	Irrigation Water Management	533 ac	8,521 ac	7,104 ac	22,075 ac	29,179 ac	571	265	670	148	
		WQT01	Irrigation system automation						1,958	1,958	1,958		
		WQT07	Regional weather networks for irrigation scheduling						4,100	4,100	4,100		
		442	Sprinkler System						288	424	742	794	
		441	Microlrrigation										
	430	Irrigation Pipeline	6,686 ft	139,904 ft	148,569 ft	117,432 ft	266,001 ft	13,827	21,325	32,926	49,354		
	Nutrient Management	590	Nutrient Management	76 ac	694 ac	720 ac	18,113 ac	18,917 ac					
		AIR08	Nitrification inhibitors or urease inhibitors						540	540	540		
		WQL04	Plant tissue tests and analysis to improve nitrogen management						1,645	1,645	1,645		
		WQL07	Split nitrogen applications, 50% after crop emergence or pasture green up						521	521	521		
		WQL11	Precision application technology to apply nutrients						1,961	1,961	1,961		
	WQL24	Apply enhanced efficiency fertilizer products	1,399	1,399	1,399								
	Pest Management	595	Pest Management	164 ac	967 ac	1,406 ac	5,717ac	7,123 ac					
		AIR04	Use drift reducing nozzles, low pressures, lower boom height, and adjuvants to reduce pesticide drift						431	431	431		
		AIR07	GPS, targeted spray application (SmartSprayer), or other chemical application electronic control technology						971	971	971		
		PLT19	Herbicide resistant weed management						503	503	503		
	Soil Management	327	Conservation Cover	886 ac	6,141 ac	8,438 ac	4,637 ac	13,075 ac					3
		329	No - Till										
		340	Cover Crop										
		ENR12	Use of legume cover crops as a nitrogen source						50	50	50		
345		Reduced Till											
450	Polyacrylamide Application	755	890	1,092	1,685								
Range Management	550	Range Planting	225 ac	1,786 ac	2,147 ac	1,984 ac	4,131 ac						
	528	Prescribe Grazing						137	281		30		
	ANM09	Grazing management to improve wildlife habitat	512	512	512								
	574	Spring Development	2										
614	Stock Water Facility	2 facilities	41 facilites	36 facilities	6 facilites	42 facilites	1		3				
Direct Intersects	Habitat Management	395	Stream Habitat Improvement and Management	38 ac	570 ac	848 ac	1 ac	854 ac					
		390	Herbaceous Cover										
		391	Riparain Forest Buffer										
		612	Tree/Shrub Establishment									1	5
		645	Upland Wildlife Habitat Management										
	657	Wetland Restoration											
	Stream Enhancement	580	Streambank and Shoreline Protection	172 ft	3,813 ft	3,813 ft	823 ft	4751 ft	195	50			
584		Channel Bed Stabilization									693		
396		Aquatic Species Passage	1 project	29 projects	17 projects	21 projects	38 projects	2		2	1		
587		Structure for Water Control (Fish Screen)						4	2	6	4		



**Goal: 4 - Enhance fish and wildlife habitat conservation area functions on lands used for agricultural activities.**

**Fish and Wildlife Habitat**

**Benchmark: 3 - Water Management - Enhance 8,521 acres of irrigation systems.**

**39 - Upper Yakima**

**Strategy/Metric Description**

Installed and implemented stewardship practice to enhance acres managed using strategies that promote water quality and aquatic habitat function by reducing inputs from surface runoff.

**Accomplishment**

Installation of the following stewardship practices; 449 - irrigation water management, WQT01 - Irrigation system automation, WQT07 - regional weather networks for irrigation scheduling, and 442 - sprinkler system. Total of 292 project and 29,180 acres installed.

**Status**

Exceeded

**Benchmark Met?**

Yes  No

**Comments**

Implementation of practices exceeded our practice benchmark goals. Project implementation was supported by financial and technical assistance programs through the USDA Natural Resources Conservation Service and the Kittitas County Conservation District. This includes the USDA Regional Conservation Partnership Program funded "Yakima Integrated Plan - Toppenish to Teanaway Project" led by the Kittitas County Conservation District and the Yakama Nation; NRCS's Environmental Quality Incentives Program (EQIP) Classic and Conservation Stewardship Program (CSP); Ecology and Washington State Conservation Commission grants to KCCD for irrigation system upgrades and Bonneville Power Administration, Salmon Recovery Funding Board, and Fish Barrier Removal Board grants to KCCD that include irrigation system components. Financial assistance is necessary to provide the incentives needed to protect and enhance critical areas while working to maintain agricultural viability in Kittitas County.

**Adaptive Management?**

Yes  No

**Benchmark Monitoring**

All practices installed have been field verified by KCCD or NRCS staff as part of the financial assistance provided to implement the practices. This includes inspections during construction of projects, final inspections and certifications for payment, and follow-up monitoring depending on the practices implemented. Management practices (e.g. Irrigation Water Management) require submittal of data that is then reviewed to ensure the management practices were appropriately implemented.

**Monitoring sufficient?**

Yes  No





# Reporting Requirements

- **Water Management – 29,179 acres**
  - 6,599 acres of sprinkler system installation
  - 22,580 acres of irrigation water management, irrigation system automation, regional weather networks for irrigation scheduling



# Reporting Requirements

- **Habitat Management – 854 acres**
  - 500 acres of tree and shrub planting (19 acres riparian, 481 acres shrub steppe)
  - 353 acres of management practices – Restoration of Rare or Declining Natural Communities and Upland Wildlife Habitat Management



# Reporting Requirements

- **Additional Available Monitoring Data**
  - BPA's Action Effectiveness Monitoring
    - Irrigation diversion structures removed (passage restored)
  - Livestock watering facility (developed spring) monitoring in shrub steppe rangeland areas



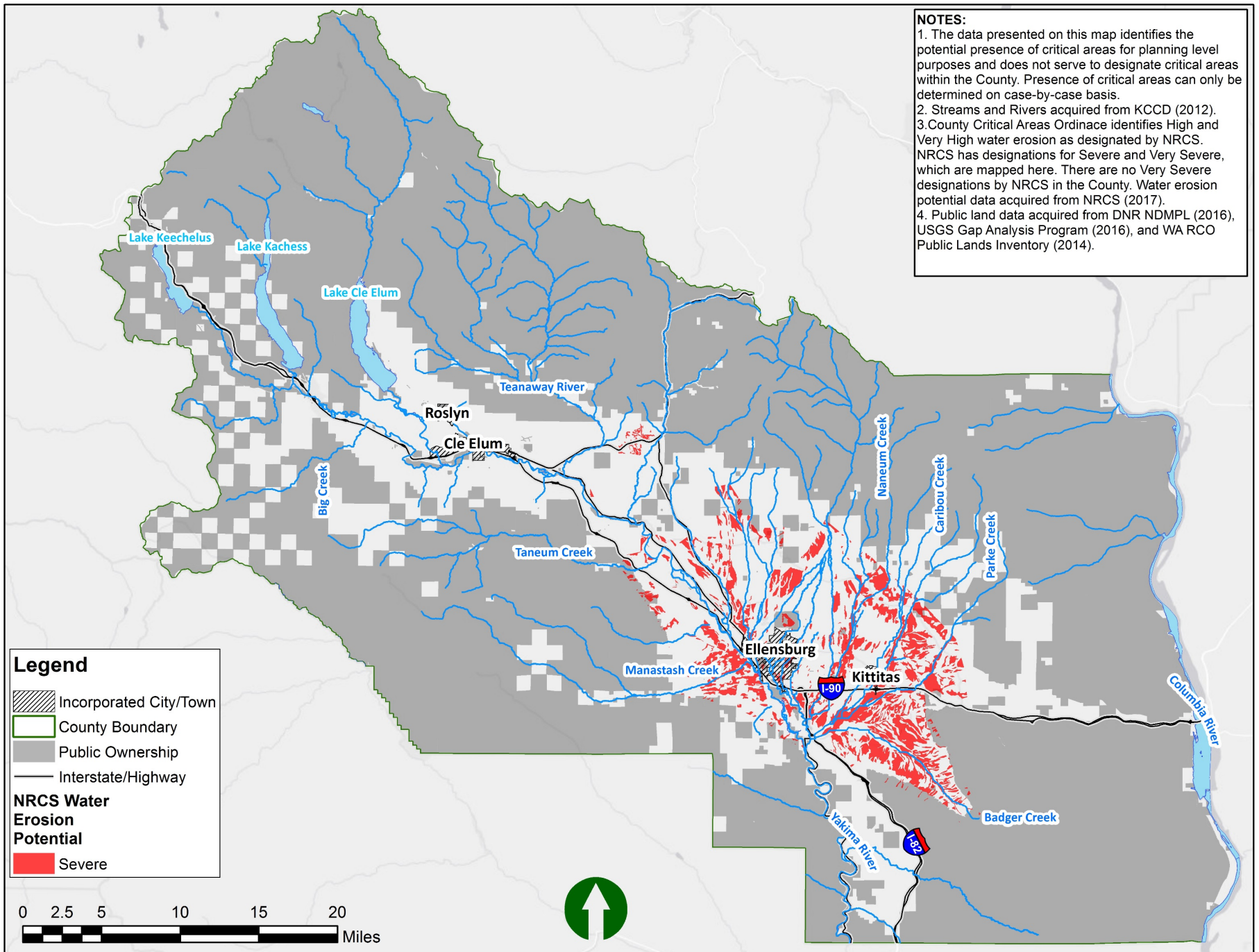
# Reporting Requirements

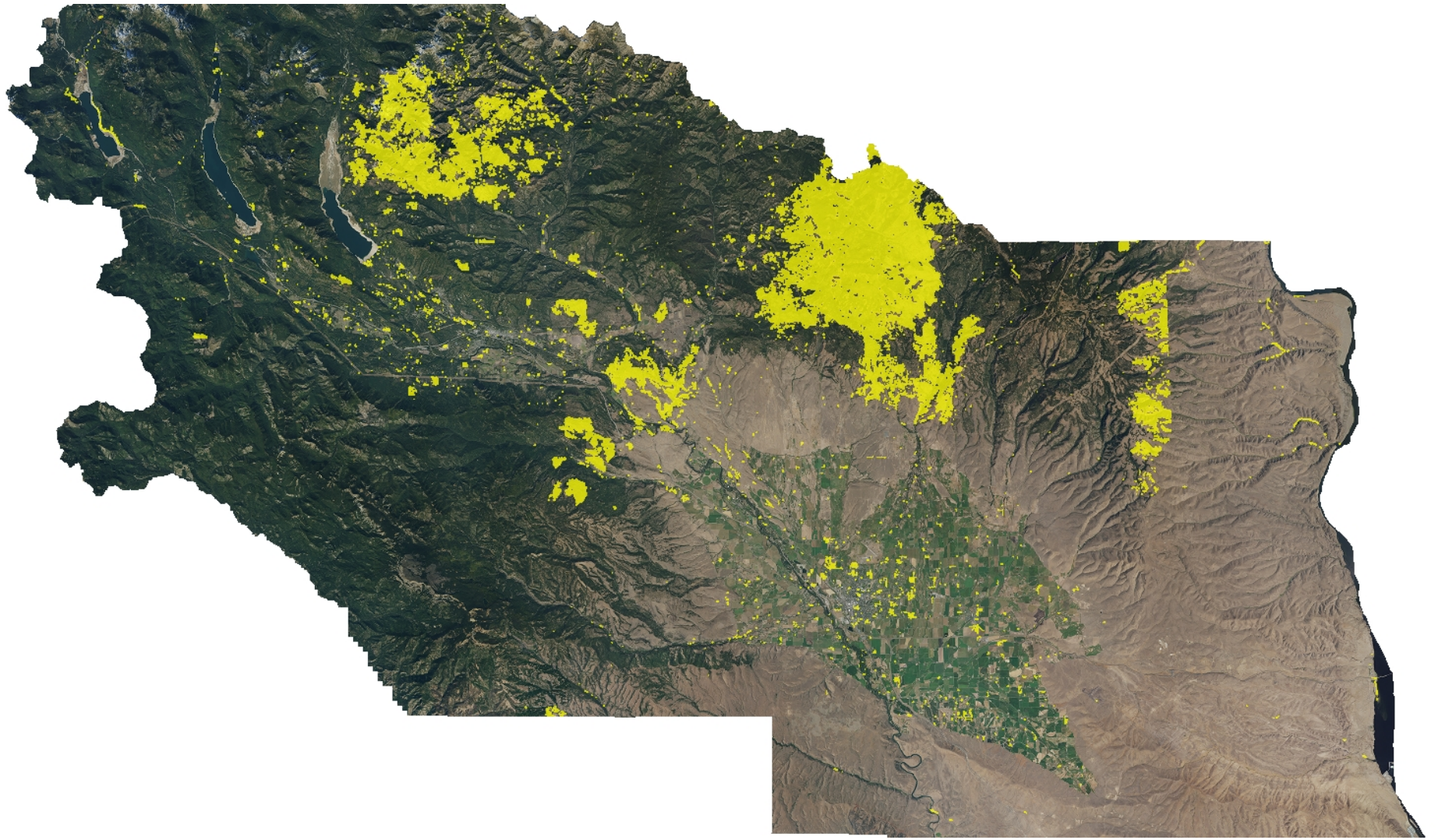
- **Additional Available Monitoring Data**
  - GIS Data to determine intersects of practices and critical areas
  - High Resolution Change Detection Data



**NOTES:**

1. The data presented on this map identifies the potential presence of critical areas for planning level purposes and does not serve to designate critical areas within the County. Presence of critical areas can only be determined on case-by-case basis.
2. Streams and Rivers acquired from KCCD (2012).
3. County Critical Areas Ordinance identifies High and Very High water erosion as designated by NRCS. NRCS has designations for Severe and Very Severe, which are mapped here. There are no Very Severe designations by NRCS in the County. Water erosion potential data acquired from NRCS (2017).
4. Public land data acquired from DNR NDMP (2016), USGS Gap Analysis Program (2016), and WA RCO Public Lands Inventory (2014).





# Reporting Requirements

- **Long Term Monitoring of Implemented Practices**
  - Annual self certification of practice maintenance
  - Structured process to select past projects for at least drive by verification annually
  - RCPP (EQIP and CSP) contract monitoring may continue with VSP funds



# Reporting Requirements

- **Long Term Monitoring of Implemented Practices**
  - Monitoring of planting projects for survival and effectiveness





# Additional Ideas

- Utilize consultant if needed to assist with data monitoring design
- Update on-line map to include more information about practices
- Update webpage (on KCCD website) to “tell the story”



# Action Register

- Draft additional information and letter regarding 5-Year Report
- Submit information and letter to Conservation Commission prior
- Work with County on new Agreement for Next Biennium

