

# Kittitas County Voluntary Stewardship Program



Watershed Group Meeting

January 17, 2020 10AM to Noon

Armory, Kittitas Valley Event Center

# Review Minutes

- Minutes – October 25, 2019



# Watershed Group Membership



# Outreach Activities

## ■ On-Line Map and Inventory

← → ↻ <https://kittitascountyvsp.mapseed.org/page/about> ☆ A ⋮

**Kittitas County** ABOUT [SIGN IN](#)  
VOLUNTARY STEWARDSHIP PROGRAM

**SHARE YOUR STEWARDSHIP**

Welcome Kittitas County Voluntary Stewards! [GET STARTED](#)

The Kittitas County Voluntary Stewardship Program (VSP) is an innovative approach to reporting the protection of critical areas.

VSP is facilitated by the Kittitas County Conservation District (KCCD), who is designated as the Technical Service Provider for this program. [Click here to learn more about KCCD's services](#)

Or, click [Get Started](#) to share your stewardship!

[GET STARTED](#)

# Outreach Activities

- Outreach plan status
  - Newsletter
  - Social Media
  - Website
  - Grower Meetings (Hay Growers, Saddle Mountain, KCCD/Farm Bureau, etc.)
- Workshop – Soil Health February 20, 2020





# Soil Health Workshop

Hosted by  
Kittitas County Conservation District

Join us for an opportunity to learn through the visual demonstration “How Soil Functions”, followed by a discussion of soil health principles from noted regional expert, Marlon Winger (USDA NRCS). Improving soil health on your farm is a process or journey and the more we emulate nature, we can start to decrease inputs. **Managing for soil health is one of the easiest and most effective ways for farmers to increase crop productivity and profitability while improving the environment.** Results are often realized immediately, and last well into the future.

**February 20, 2020**  
**10AM to 2PM**

**Kittitas Valley Event Center, Armory**  
**901 E 7th Ave**  
**Ellensburg WA 98926**

 *Lunch is provided* 


Please RSVP to:  
[m-nash@conserveva.net](mailto:m-nash@conserveva.net)  
or 925-3352 ext. 201



*The principles of soil health are universal. The challenge becomes how you will implement them on your own farm or ranch.*

## About Our Speaker

*Marlon grew up on a family owned dairy farm in Dayton, Idaho, where he found his passion for life (Agriculture). He earned BS and MS degrees at Utah State University in Plant Science and worked as a County Agricultural Agent for Utah State University Extension service for 9 years. Marlon has worked for the USDA - Natural Resources Conservation Service (NRCS) for about 12 years. He was the Area agronomist in Northern Utah, the State Agronomist in Idaho, currently works as the Regional Soil Health Specialist for MT, WY, and Idaho. Marlon and his family live on a ranchette in Casper, WY.*

This workshop is hosted by the Kittitas County Conservation District as part of the  
 **Voluntary Stewardship Program (VSP).**

To learn more about VSP visit  
[www.kccd.net/voluntary-stewardship-program](http://www.kccd.net/voluntary-stewardship-program) or contact  
Anna Lael at 925-3352 ext 207 or  
[a-lael@conserveva.net](mailto:a-lael@conserveva.net)



# Technical Assistance

- Landowner Inventories
- Drone Technology



# Financial Assistance

- Individual Producer Opportunities
  - Integrated Plan Water Conservation Funds
    - Trust Water
  - Conservation Commission
    - Natural Resource Inventory Funds
      - Limited to \$50,000/landowner
    - Irrigation Efficiencies Program
  - RCPP (EQIP) – 2020 Applications still being accepted
    - Initial screening completed in December 2019





# Streamlining WA Funding Pools due to Adoption of CART

- CART is the new NRCS ranking tool we will be using in future sign-ups.
- CART envisions the agency's close working relationship with Local Workgroups to continue and have the potential to increase!
- CART has greater capabilities to utilize geospatial mapping.
- LWG Resource Concern priorities should also be established in LWG ranking questions.
- Overall, NRCS WA is streamlining the number of funding pools – the State Conservationist is allowing 2 unique local pools per LWG
- Overall state funding will not decrease because of streamlining funding pools.
- All previous Big Bend Team local funding pools are already reflected as state funding pool.



# How does CART work? => Integrating IT



## Phase I

### Collect & Analyze

- Identify Problem
- Determine Objective
- Inventory Resources
- Analyze Resource Data

## Phase II

### Decision Support

- Formulate Alternatives
- Evaluate Alternatives
- Make Decision

## Phase III

### Implementation & Evaluation

- Implementation Requirements
- Implement the Plan
- Evaluate the Plan

Conservation Desktop Future

Conservation Assessment Ranking Tool

Environmental Assessment

Protracts

Funds Manager

CAPS - Outcomes

Resource Concerns  
Planning Criteria (Threshold)  
Existing Conditions  
CPPE

Conservation Plan

CAPS – Resource Assessment  
Conservation Practices  
Economics

CAPS - Designs  
Checkout

Natural Resources Conservation Service

[nrcs.usda.gov/](http://nrcs.usda.gov/)



# One LWG Pool for 2020

## 2020 Proposed Priority Resource Concern: Source Water Depletion – Surface Water Depletion

Land Use: CROP

Priority RC 1: Source Water Depletion - Surface Water Depletion

Local Ranking Question(s):\*

|                                                                                      |                                                                                                                                                                                                                                               | FY 2020 |        |
|--------------------------------------------------------------------------------------|-----------------------------------------------------------------------------------------------------------------------------------------------------------------------------------------------------------------------------------------------|---------|--------|
| Number                                                                               | Question                                                                                                                                                                                                                                      |         | Points |
| 1                                                                                    | Does the producer have an approved conservation activity plan (CAP) or approved VSP plan? (CAP= agEMP or Audit completed that meets NRCS standards) and does the proposed project implement at least one practice within the applicable plan? |         | 350    |
| 2                                                                                    | What is the efficiency gain from going to current irrigation system to planned system (reference the adjacent chart only to make determination)? +25% = 50pts; +15-25% = 25pts; +less than 15% = 5pts                                         |         | 50     |
| 3                                                                                    | Does the plan include (449) Irrigation Water Management (required for 2 growing seasons, with moisture sensors and/or data logger)?                                                                                                           |         | 100    |
| 4                                                                                    | Is the project located in Grant, pandhandle of Adams, or Kittitas county?                                                                                                                                                                     |         | 50     |
| 5                                                                                    |                                                                                                                                                                                                                                               |         |        |
| 6                                                                                    |                                                                                                                                                                                                                                               |         |        |
|                                                                                      |                                                                                                                                                                                                                                               | Total:  | 550    |
| *See Ranking Tab for National and State ranking questions. (Max. Local Points = 550) |                                                                                                                                                                                                                                               |         |        |

**Surface Water Depletion – water from collected precipitation runoff, ponds, lakes, surface water courses, and reservoirs is used at a rate that is detrimental to ecological functions or other identified uses and threatens sustained availability of surface water.**

**Objective to Treat Resource Concern: reduce surface water depletion**



# Financial Assistance

- Program Updates
  - RCPP
    - New round applications due May/June 2020



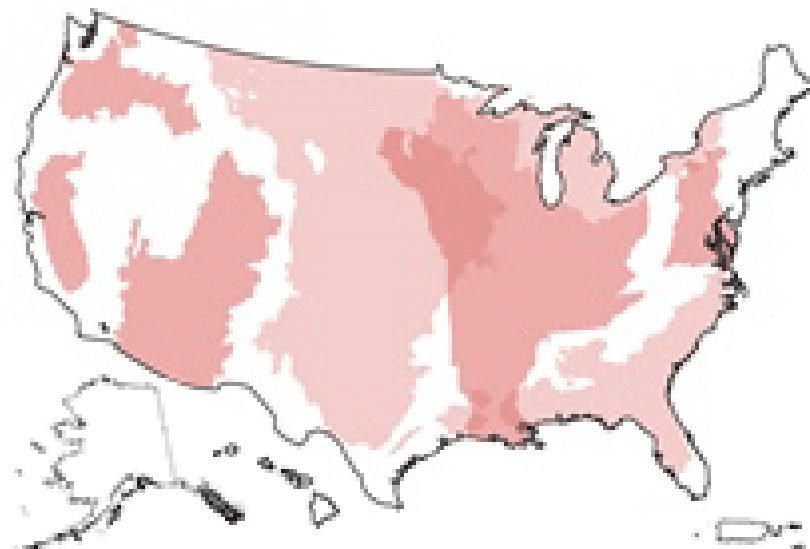
# RCPP – 2020 Application Announcement

## ■ RCPP Conservation Activities

- Land management/land improvement/restoration practices
- Land rentals
- Entity-held easements
- United States-held easements
- Public works/watersheds

## ■ Funding Pools

- State/Multi-state
- Critical Conservation Areas



# Financial Assistance

- Program Updates
  - Fish Barrier Removal Board
  - Watershed Pathway



# Financial Assistance

- Program Updates
  - Salmon Recovery Funding Board
    - Yakima Fish Passage Targeted Investment Projects
    - The Ranch on Swauk Creek
    - Upper Yakima River Cottonwood Assessment
    - Tjossem Ditch -- Improving Salmonid Survival



# Financial Assistance

- Program Updates
  - Kittitas County's Distressed Counties Sales & Use Tax Funding





# Financial Assistance

- Program Updates
  - NACD Urban Agriculture Conservation Initiative
    - Thorp School District's "Farm to School" Initiative Proposal



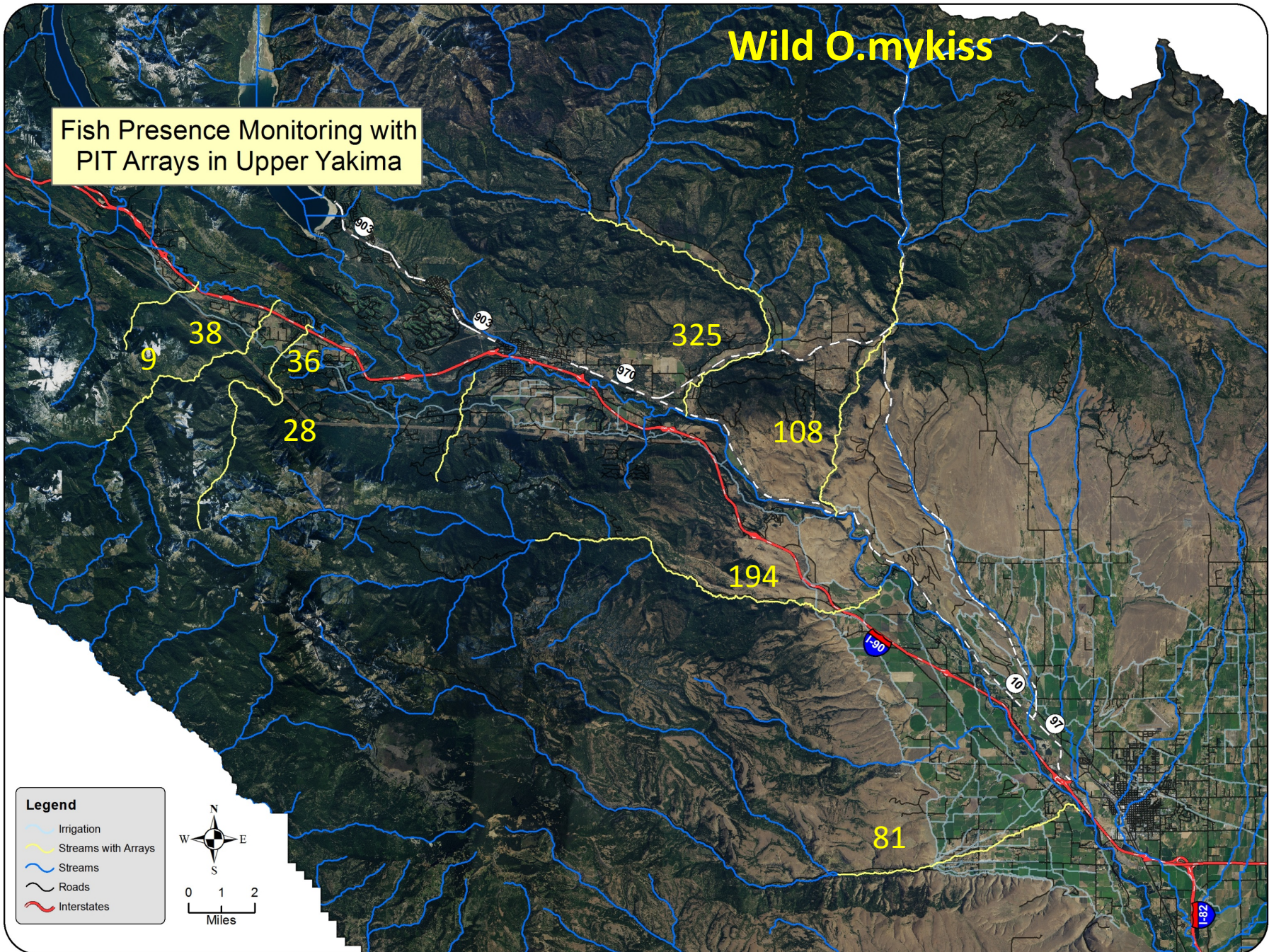
# Monitoring Efforts

- Data Management and Tracking
  - GIS layers with all projects since 2011
- Review of Resource Monitoring
  - PIT Array Data for fish presence



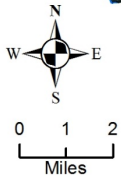
# Wild O.mykiss

Fish Presence Monitoring with PIT Arrays in Upper Yakima



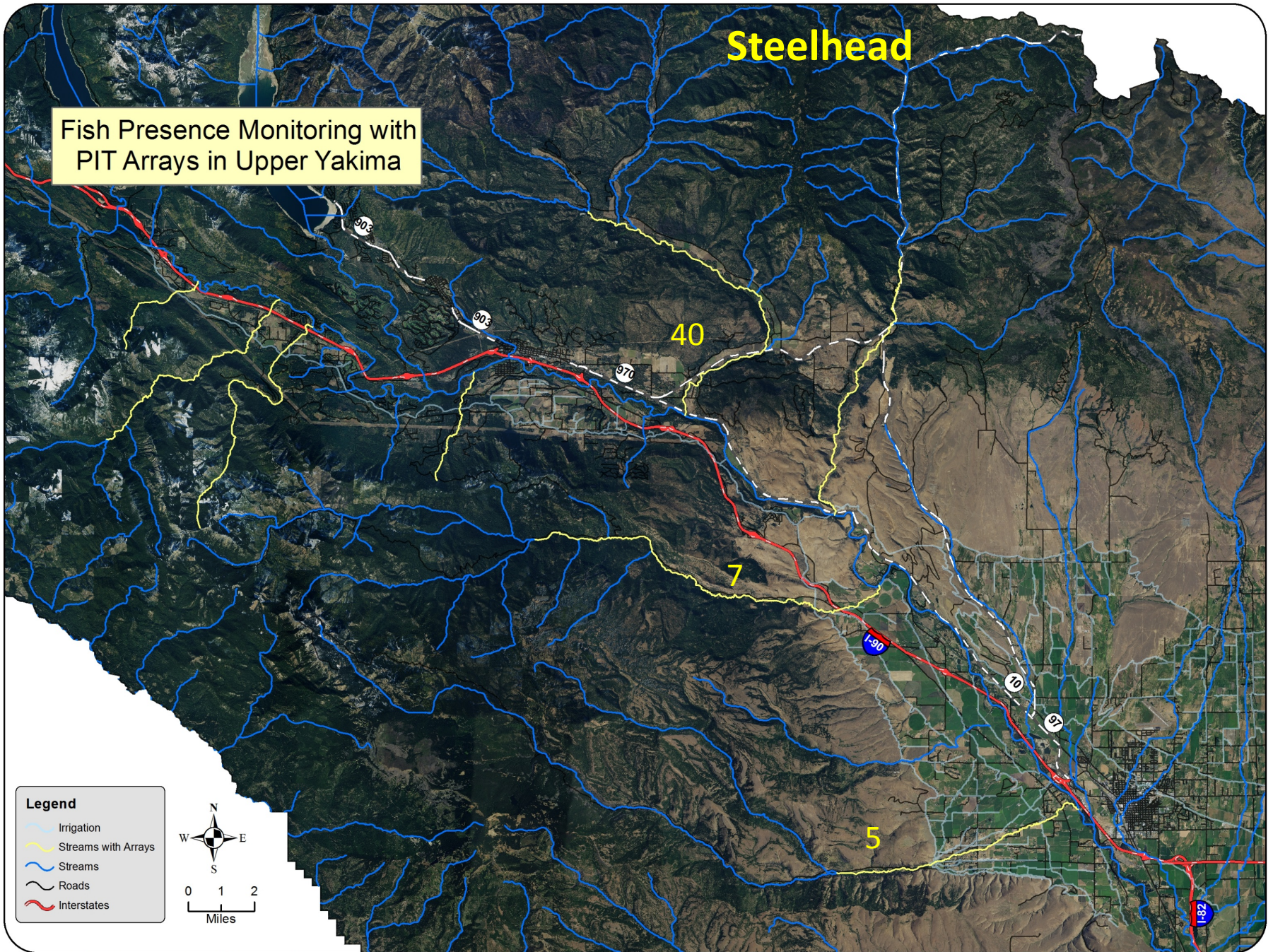
### Legend

- Irrigation
- Streams with Arrays
- Streams
- Roads
- Interstates



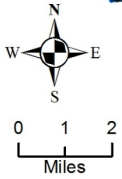
# Steelhead

Fish Presence Monitoring with PIT Arrays in Upper Yakima



**Legend**

- Irrigation
- Streams with Arrays
- Streams
- Roads
- Interstates

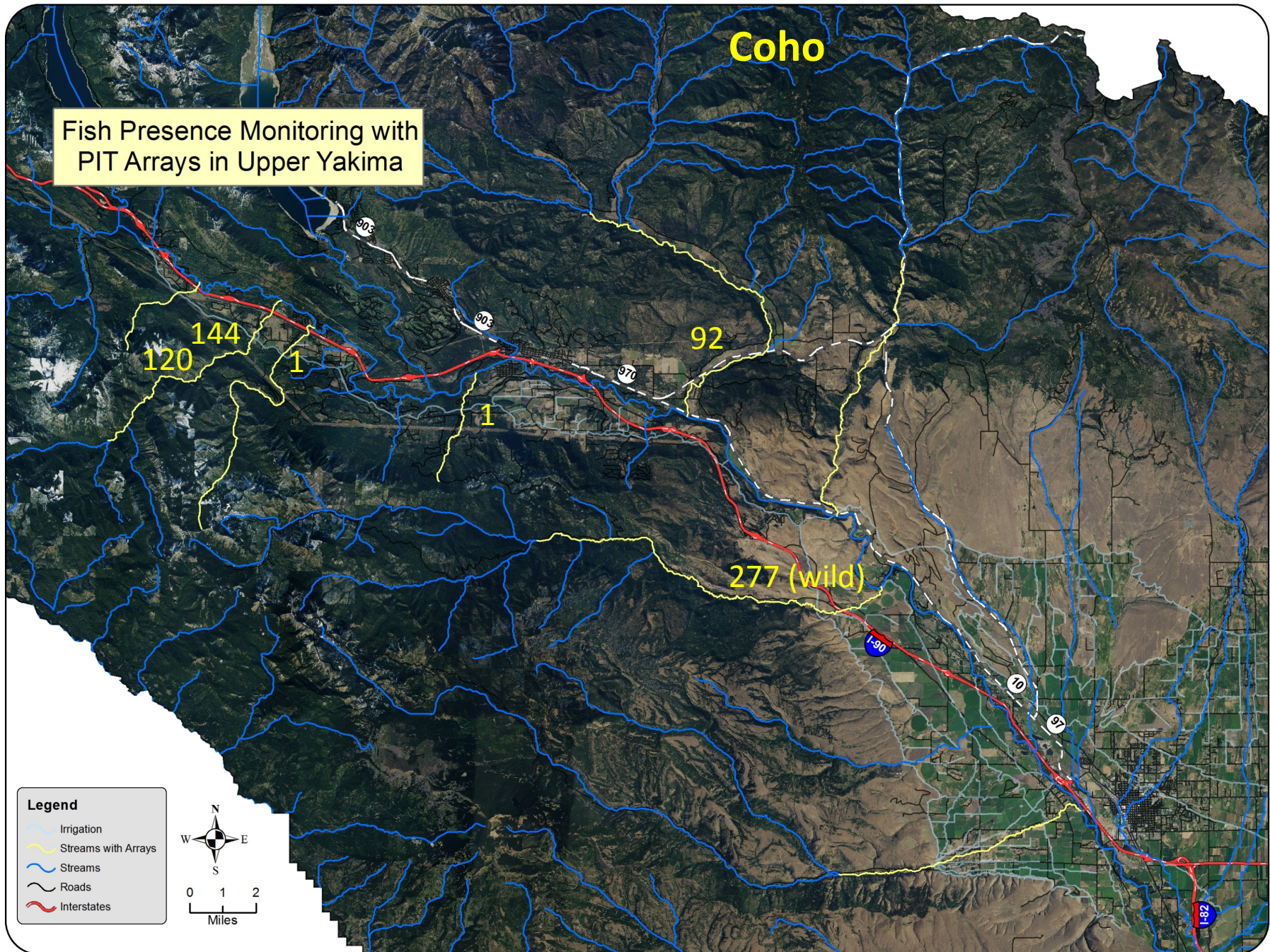


This data is provided "as is" without warranty of any kind. Further, the Kittitas County Conservation District does not warrant, guarantee, or make any representations regarding the use of, or results from the use of the data in terms of correctness, accuracy, reliability, currentness, or otherwise. Hydrology layer is in draft form. Parcel layer was obtained from the Kittitas County Assessor and is not survey quality.

Produced by the Kittitas County Conservation District on 10/07/2019

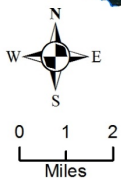
# Coho

Fish Presence Monitoring with PIT Arrays in Upper Yakima



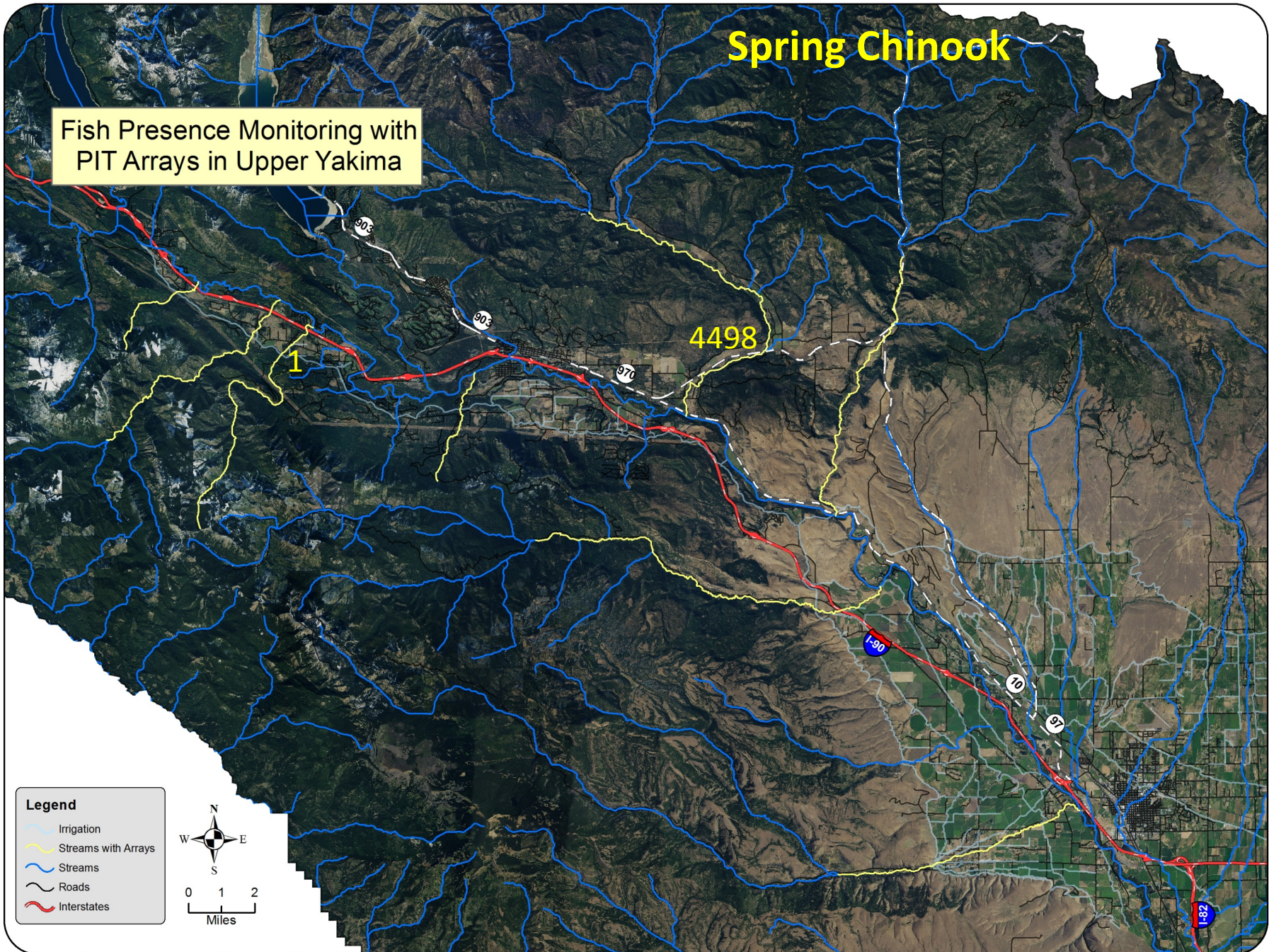
### Legend

- Irrigation
- Streams with Arrays
- Streams
- Roads
- Interstates



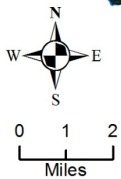
# Spring Chinook

Fish Presence Monitoring with PIT Arrays in Upper Yakima



## Legend

- Irrigation
- Streams with Arrays
- Streams
- Roads
- Interstates



# Coho Redd Surveys (fall 2019)

## ■ Preliminary Data (definite)

- Badger Creek/Wipple Wasteway – 25
- Cherry Creek – 6
- Cooke Creek – 1
- Wilson Creek – 2
- Naneum Creek – 3
- Taneum Creek – 7
- Teanaway River - 1

## ■ Preliminary Data (possible)

- Badger, Coleman, Cooke, Mercer, Reecer, Taneum, Wilson



# Reporting Requirements

- 5 Year progress report
  - Due November 2020
- Goals & Benchmarks
  - Riparian Habitat
    - Projects and potential projects
      - RCPP Contract - 2 acres
      - RCPP Application – 2 acres
      - SRFB Grant – 1 acre
      - Potential crack willow removal and replacement





# Action Register

- Soil Health Workshop – February 20, 2020  
10AM- 2PM
- Watershed Group Meeting - March 20, 2020  
10AM-12PM

