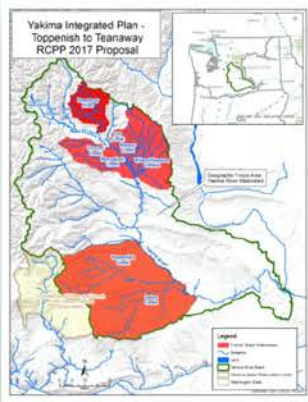


# Kittitas County Conservation District Special Assessment Activities 2016



May 2017

**KITTITAS COUNTY CONSERVATION DISTRICT**  
**SPECIAL ASSESSMENT**

**SUMMARY OF ACTIVITIES**  
**JANUARY 1, 2016 TO DECEMBER 31, 2016**

May 3, 2017

## Table of Contents

<i>2016 Special Assessment Income and Expenditures</i> .....	2
<i>2016 Special Assessment Activities</i> .....	4
<i>ADMINISTRATION</i> .....	4
<i>DISTRICT OPERATIONS</i> .....	4
<i>EDUCATION/OUTREACH</i> .....	4
<i>TECHNICAL ASSISTANCE</i> .....	5
<i>FINANCIAL ASSISTANCE</i> .....	6
<i>COOPERATIVE PROJECTS/PROGRAMS</i> .....	6
<i>2016 Geographic Scope of District Programs and Activities</i> .....	7
<i>Leveraging of Additional Funds</i> .....	9
<i>GRANT APPLICATIONS SUBMITTED</i> .....	10
<i>2017 Rates &amp; Charges Budget</i> .....	12

## Figures

<i>Figure 1 Special Assessment Income and Expenses 2007 to 2016.</i> .....	2
<i>Figure 2 Map of District provided assistance in 2016.</i> .....	8
<i>Figure 3 Special Assessment Funds and Leveraged Funds</i> .....	10

## Tables

<i>Table 1 Special Assessment Budget and Expenditures 2013 through 2016.</i> .....	3
<i>Table 2 Leveraged funds expended in 2016 and leveraged funds secured for 2017 and 2018.</i> .....	9
<i>Table 3 Budget for 2017 for Funds Collected through System of Rates&amp; Charges.</i> .....	12

## 2016 Special Assessment Income and Expenditures

The Kittitas County Conservation District (hereinafter “District”) is authorized to receive Special Assessment funds by Revised Code of Washington RCW 89.08.400. The District completed the required steps to receive this funding in 2006. Assessment funds were received by the District beginning in 2007. Annual receipts of the Special Assessment funds increased by 1-2% each year, although between 2010 and 2011, there was an 8% increase, due to the collection of a substantial amount of delinquent property taxes in 2011. Collections were essentially level for the following three years, with a slight increase in 2015 and 2016. See Figure 1. In 2016, the Kittitas County Treasurer collected \$159,149 and transferred those funds to the District.

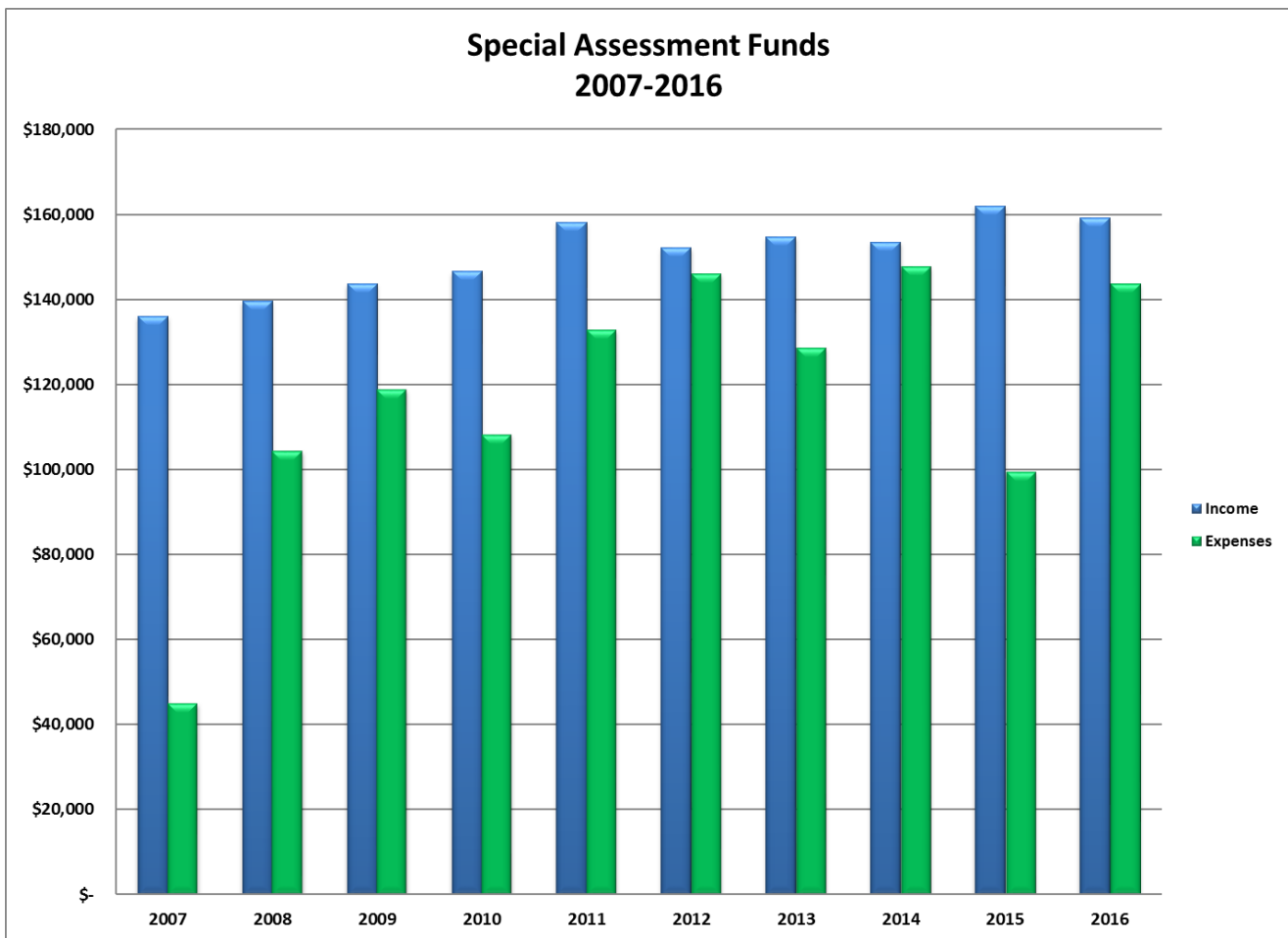


Figure 1 *Special Assessment Income and Expenses 2007 to 2016.*<sup>1</sup>

<sup>1</sup> In 2014, the KCCD also purchased a building, expending \$173,938 in Special Assessment funds on the down payment and a necessary remodel project. This amount is not included in Figure 1.

The District divides expenditures into five categories, Administration, District Operations, Educational Assistance, Technical Assistance, Financial Assistance, and Cooperative Project/Program Development. In addition, the District notes the annual payment to the County for collection of the Special Assessment in a separate category. See Table 1 below for detail by category over the last four years.

**Table 1** *Special Assessment Budget and Expenditures 2013 through 2016.*

	2013		2014 <sup>2</sup>		2015		2016	
	Budget	Expenditures	Budget	Expenditures	Budget	Expenditures	Budget	Expenditures
5% Fee to Kittitas County	\$7,607	\$8,614	\$7,753	\$7,440	\$7,753		\$7,526	\$15,085
Administration	\$2,000	\$17,571	\$12,500	\$1,152	\$12,500	\$2,974	\$10,000	\$32,319
District Operations	\$15,000	\$15,809	\$35,000	\$52,517	\$32,967	\$20,954	\$40,000	\$28,391
Educational Assistance	\$20,000	\$14,500	\$18,000	\$25,318	\$18,000	\$12,440	\$13,000	\$16,538
Technical Assistance	\$30,000	\$26,374	\$26,500	\$34,730	\$26,500	\$20,639	\$26,500	\$17,569
Financial Assistance	\$61,000	\$45,691	\$32,780	\$17,284	\$32,780	\$14,172	\$33,000	\$6,080
Cooperative Project/Program Development	\$15,000	\$8,614	\$22,500	\$7,036	\$22,500	\$21,802	\$20,500	\$29,873
<b>Total</b>	<b>\$150,607</b>	<b>\$128,559</b>	<b>\$155,033</b>	<b>\$147,766</b>	<b>\$153,000</b>	<b>\$99,502</b>	<b>\$150,526</b>	<b>\$145,854</b>

<sup>2</sup> In 2014, the KCCD also purchased a building, expending \$173,938 in Special Assessment funds on the down payment and a necessary remodel project. This amount is not included in Table 1.

## 2016 Special Assessment Activities

During 2016, funds were expended in the five categories for the following activities and projects.

### *Administration*

- Staff time to administer the Special Assessment.
- Staff time to produce annual reports for the Board of County Commissioners.
- Staff time, materials and professional services to complete the process of proposing, approving and implementing a system of [Rates & Charges](#) to replace the Special Assessment that expired at the end of 2016. Per RCW 89.08.405, the District:
  - Conducted a rate study analysis with assistance from a consultant (FCS GROUP) with experience assisting conservation districts.
  - Proposed a system of rates and charges as part of that rate study analysis.
  - Elected to include state owned lands in the proposal and sent notices in May 2016 per RCW 79.44.040 to seven state agencies who own land in the District boundaries.
  - Invited the community to Public Hearings and solicited written comments on the proposed system of rates and charges through legal notices in the Ellensburg Daily Record and the Northern Kittitas County Tribune; a dedicated page on the KCCD website; fliers posted at 12 locations around the District; and an article in the District newsletter (circulation 9,488) delivered to all rural routes and the City of Cle Elum residents.
  - Conducted two public hearings on June 22 and June 23, 2016.
  - Approved the final version of the Kittitas County Conservation District Rate Study Report, and District Resolutions 2016-002 (System of Rates & Charges) and 2016-003 (Landowner Appeal Process) at the meeting of the District Board of Supervisors on July 14, 2016.
  - Submitted the approved Resolutions, the final Kittitas County Conservation District Rate Study Report (KCCD, July 2016), a proposed budget, an estimate of revenues, and a draft Interlocal Agreement to the Board of County Commissioners on July 28, 2016.

Subsequently, the Kittitas Board of County Commissioners passed [Resolution 2016-016](#) approving the revenue to the District through the system of rates & charges and executed an [interlocal agreement with the District](#) defining the process of collecting the revenue and responsibilities of both the County and the District.

### *District Operations*

- Staff time to operate the District including support of general activities such as conducting meetings, financial management activities, completing annual plans and reports, updates of policies, etc. This item is primarily staff time for the District Manager and Financial Manager to conduct those activities and represents only a portion of the total cost of District Operations which are primarily supported by indirect (overhead) charges on individual grants and direct funding from the Washington State Conservation Commission.

### *Education/Outreach*

- One [District Newsletter](#) was published and distributed. Circulation is 13,000 and includes rural routes and the City of Cle Elum. The newsletters focus on providing project and program information to landowners and land managers, as well as specific technical information. This item includes the costs of the newsletter production and mailing, as well as staff time involved in creating the articles and layouts. This item is supported by other grants to the District as well.
- [District Website](#) maintained.
- 120 calendars were created and distributed as a “virtual tour” of District projects.

- Conservation District Station (soil erosion) at the Agricultural Appreciation Day (hosted by WSU Extension Kittitas County for third grade classes from across the County).
- Water on Wheels and Wheat Week curriculum presented to 1,111 students in Lincoln, Mt. Stuart and Valley View Elementary Schools in the 2015/2016 school year.
- A Conservation Easements Workshop was hosted in partnership with Forterra in November 2016.
- District staff participated in panels associated with showings of the "[Era of Megafires](#)" in northern Kittitas County.

## ***Technical Assistance***

- District staff compiled an inventory of landowners interested in converting from rill to sprinkler irrigation beginning in 2012. The inventory has been continuously updated annually as the District has worked with the Conservation Commission to secure funding. The first round of the funding from the Legislature came in the 2014-2015 biennium and was designated as "Non-Shellfish". Fourteen projects were constructed in that biennium, with an additional three funded in the 2016-2107 biennium. Of those three, one was completed and the other two will be completed in 2017. Currently, there are approximately 60 projects (4,000 acres) on the list waiting for funding.
- Six FIREWISE workshops/events were conducted for several communities to help maintain and encourage new FIREWISE USA® Communities designations. In 2016, three communities were assessed and achieved FIREWISE USA status including Goat Peak Ranch Home Owners Association, Hyak, and Lauderdale Ridge HOA. They were added to the following list of Kittitas County communities that are designated (each is listed with the year they first achieved that status):
  - Banti Creek, Cle Elum, 2015
  - Buffalo Springs, Cle Elum, 2013
  - Goat Peak Ranch Home Owners Association, 2016 (with assistance from DNR)
  - Green Canyon, Ellensburg, 2015
  - Hidden Valley Terrace, Cle Elum, 2014
  - Hidden Valley Vistas/Hidden Valley Meadows, Cle Elum, 2012
  - Hyak, 2016
  - Kachess Ridge, Easton, 2013
  - Kachess Village, Easton, 2013
  - Lauderdale Ridge HOA, 2016
  - Morgan Creek, Ronald, 2015
  - Pine Loch Sun, Ronald, 2013
  - Ski Tur Valley, Snoqualmie Pass, 2014
  - Sky Meadows Ranch, Cle Elum, 2009
  - Sun Country, Cle Elum, 2012
  - Sunlight Waters, Cle Elum, 2012
  - Swauk Pines, Cle Elum, 2013
  - Teanaway Terrace, Cle Elum, 2013
  - Vistas at Cle Elum, Cle Elum, 2013
  - Wagon Wheel, Cle Elum, 2010
- Other communities contacted include Sunshine Ridge HOA, Edgemont and Wildwood.
- 63 Firewise assessments were completed for landowners.
- Coordination and planning for the Roving Chipper operated by Fire District No. 7 to visit 18 communities including Kachess Ridge, Kachess Village, Emerick Rd, Leo Lane, Wagon Wheel, Wildwood, Sky Meadows, Hidden Valley, Teanaway Terrace, Pine Loch Sun, Sun Country, Goat Peak, Driftwood acres, Tillman Creek, Hyak, Gold Creek, Buffalo Springs, lower Teanaway and Sunlight Waters.

- Conservation plans were completed for four landowners participating in the Small Project Cost Share Program and the Non-Shellfish Sprinkler Conversions.
- Various site, phone call and office visits with landowners seeking assistance with land management throughout the year.
- District staff participated in the Resource Lands Advisory Group for the Kittitas County Comprehensive Plan update.

## ***Financial Assistance***

- **Funding for Small Project Cost Share applications.** This cost share program offers 50% reimbursements and up to \$4,000 for landowners. Applications are prioritized annually by the Board of Supervisors with an emphasis on water quality and water quantity improvements. Nine applications were received in September 2015. Four were awarded funding but only two were completed by May 2016 as one cancelled and was granted a time extension. In September 2016, six applications were received, and four were funded with work expected to be completed by May 2017. Cost share funds for this work were all provided in 2016 by matching funds through the Conservation Commission. The 2015 application that received a time extension is slated to receive Special Assessment funding.
- **Fuels Reduction/Firewise Projects.** Sixteen individual fuels reduction projects and 18 community roving chipper events were completed. The fuels reduction projects provided direct cost share to landowners who treated a total of 57 acres. The District utilized funds for Fire District No. 7 crews and a chipper to work on individual landowner projects and to provide “roving chipper” services in recognized Firewise communities addressing 77 acres. The communities pruned and trimmed and the crews gathered and chipped the materials. Special Assessment funds were used to supplement the overall effort by providing cost share funds to one landowner and supporting the operation of the roving chipper.
- **PAM Cost Share for Erosion Control for 7 landowners.** Assessment funds were used to supplement other available funding through Kittitas County Public Works Road Funds and a Washington State Conservation Commission grant. Seven landowner agreements were approved and the estimated soil savings was 5,321 tons.

## ***Cooperative Projects/Programs***

- **Chlorophyll Meter and Hay Growers.** The District is working with the [Organization of Kittitas County Timothy Hay Growers & Suppliers](#) to utilize a meter to measure chlorophyll content or “greenness” of different hay crops under different fertilizer scenarios. This effort is based on work by [WSU Extension](#) where they worked to determine in season optimum nitrogen rate for sustainable hay production.
- **Yakima Basin Integrated Plan (YBIP).** District staff continued to work with various subcommittees (Water Conservation and Habitat) to try to secure state grant funds. District staff also applied for funding through the USDA Natural Resources Conservation Service’s [Regional Conservation Partnership Program](#) (RCPP). In 2016, a third RCPP funding round was announced. In cooperation with the YBIP Implementation Committee, the District partnered with the Yakama Nation who sponsored another proposal that was focused on the Upper Yakima watershed and the Yakama Reservation. Significant staff hours were invested in the proposal. The District worked with the Teanaway Community Forest grazing subcommittee to provide a facilitator to assist with a grazing plan for the 2017 season and beyond.
- **Seaton Water Users project.** The District was asked by the Bonneville Power Administration (BPA) to assist the Seaton Water Users on the Teanaway River with the replacement of their existing pump.
- **Big Bend Local Work Group (LWG).** District staff participated in meetings with USDA Natural Resource Conservation Service for the Big Bend Local Work Group. The LWG provides guidance to the NRCS on funding priorities for their programs in the Big Bend area (Kittitas and Grant Counties).



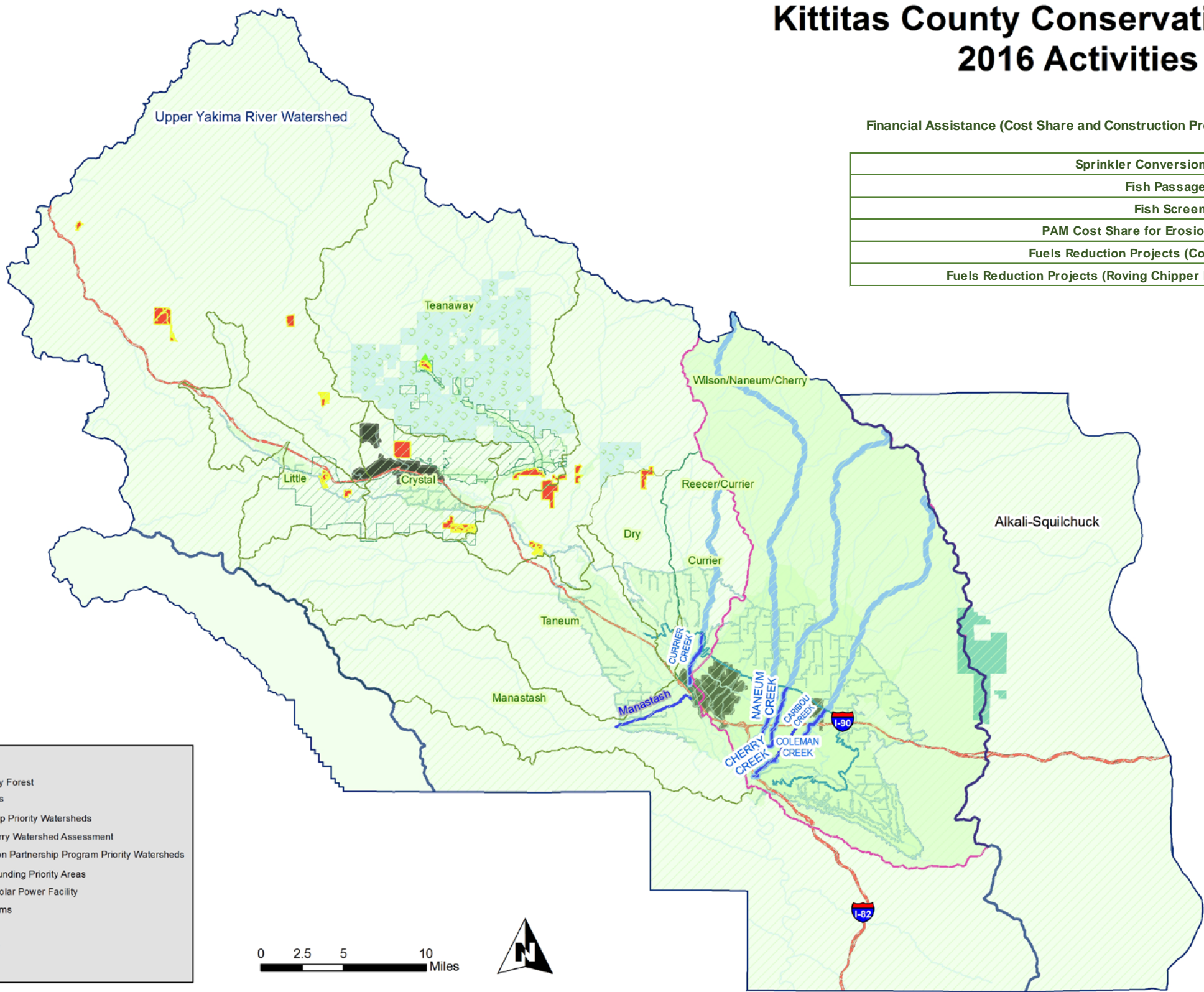
- **Emergency/Disaster Response.** The District completed a draft emergency/disaster response plan with the Special Assessment funding staff time and a small grant from the [PSE Foundation](#) facilitated by the Economic Development Coalition of Kittitas County (EDC) funding a consultant. A second application to the PSE Foundation was submitted in 2016 for additional work with emergency/disaster response planning again with the assistance of the EDC.
- **Fire Adapted Communities.** District staff participated in the [Washington Fire Adapted Communities \(WAFAC\) Learning Network](#) Steering Committee.
- **USDA Service Center.** The District continues to provide 388 square feet of office space to the USDA Natural Resources Conservation Service and the Farm Service Agency in order to assist them with delivery of their conservation programs locally while they work toward securing a long-term lease through their procurement process. This provides landowners with access to these programs without driving to either Ephrata or Yakima.

## 2016 Geographic Scope of District Programs and Activities

The District implements projects and programs that address resource priorities across the county. The activities directly funded by or leveraged by the Special Assessment are described in this report; however, there are additional activities that are primarily funded through other sources (e.g. Washington State Conservation Commission, Department of Ecology, Bonneville Power Administration). Figure 2 provides a graphic representation of the areas of Kittitas County directly impacted by all of the activities of the District in 2016, regardless of funding sources.

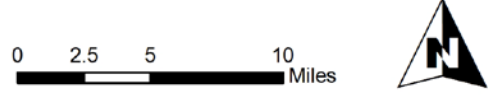
# Kittitas County Conservation District 2016 Activities

Financial Assistance (Cost Share and Construction Projects)	Acres	# of Producers
Sprinkler Conversion Projects	167.0	4
Fish Passage Projects	2.2	6
Fish Screen Projects	4850	70
PAM Cost Share for Erosion Control	1320.7	8
Fuels Reduction Projects (Cost Share)	57	16
Fuels Reduction Projects (Roving Chipper Program)	77	91
	<b>6474</b>	<b>195</b>



**Legend**

- Teanaway Community Forest
- Firewise Communities
- Voluntary Stewardship Priority Watersheds
- Naneum-Wilson-Cherry Watershed Assessment
- Regional Conservation Partnership Program Priority Watersheds
- USDA Joint Chiefs Funding Priority Areas
- Wild Horse Wind & Solar Power Facility
- YTAHP Project Streams
- Hydrology
- Highway/State Route
- Incorporated Cities



This data is provided "as is" without warranty of any kind. Further, the Kittitas County Conservation District does not warrant, guarantee, or make any representations regarding the use of, or results from the use of the data in terms of correctness, accuracy, reliability, currentness, or otherwise.

Produced by the Kittitas County Conservation District on 4/28/2016

Figure 2 Map of District provided assistance in 2016

## Leveraging of Additional Funds

Each year, the District leverages additional resources with the Special Assessment funds. Between 2008 and 2015, matching funds and resources totaled \$6,859,325. In 2016, an additional \$1,563,291 in matching funds were expended, bringing the total match to \$8.42 million. The 2016 expended funds and the funds secured for the future years are detailed in Table 2 below.

**Table 2** Leveraged funds expended in 2016 and leveraged funds secured for 2017 and 2018.

Source	Project or Program	Expended in 2016	Secured for Future
Kittitas County Public Works	PAM Cost Share Program	\$1,902	
Landowners	Cost Share on Firewise, PAM, Non-Shellfish and Small Projects	\$159,868	
Puget Sound Energy	Wild Horse Baseline Monitoring	\$4,887	
Kittitas County Public Works	EWC/Coleman Project	\$31,769	
Washington Department of Ecology	KGH- Coleman/EWC	\$233,180	
Washington Department of Ecology	Yakima Basin Integrated Plan- Conservation & Habitat Funding	\$603,474	\$1,335,000
Washington Department of Natural Resources	Firewise and Forest Health Grants	\$148,507	\$116,493
Washington State Conservation Commission	Implementation Grant for Projects and Technical Assistance	\$72,921	
Washington State Conservation Commission	Conservation Reserve Enhancement Program	\$286	
Washington State Conservation Commission	Cultural Resources	\$14,251	
Washington State Conservation Commission	Non-Shellfish funding for Sprinkler Conversions	\$52,547	\$124,051
Washington State Conservation Commission	Coordinated Resource Management	\$7,000	
Washington State Conservation Commission	Voluntary Stewardship Program	\$26,814	\$120,000
FEMA Via Kittitas County	Firewise	\$85,202	\$276,859
Bonneville Power Administration	Seaton Water Users	\$20,095	
South Central Washington RC&D	Fire Adapted Communities	\$16,062	
PSE Foundation	Emergency/Disaster Relief Planning	\$2,700	\$10,000
USDA Natural Resources Conservation Service	Joint Chiefs Landscape Restoration Partnership - All Hands All Lands Proposal	\$76,000	\$125,000
USDA Natural Resources Conservation Service	Regional Conservation Partnership Program – Yakima Basin Integrated Plan Toppenish to Teanaway Project (FY 17 and FY18 funds only)		\$1,117,879
USDA Natural Resources Conservation Service	Utilities for office space	\$5,826	\$6,000
<b>Totals</b>		<b>\$1,563,291</b>	<b>\$3,231,282</b>

In summary, the Special Assessment to date has leveraged an average of \$7.74 for every dollar of the Assessment funds collected. See Figure 3 for a graphic display of leveraged funds, both those already expended and those secured for future projects and activities.

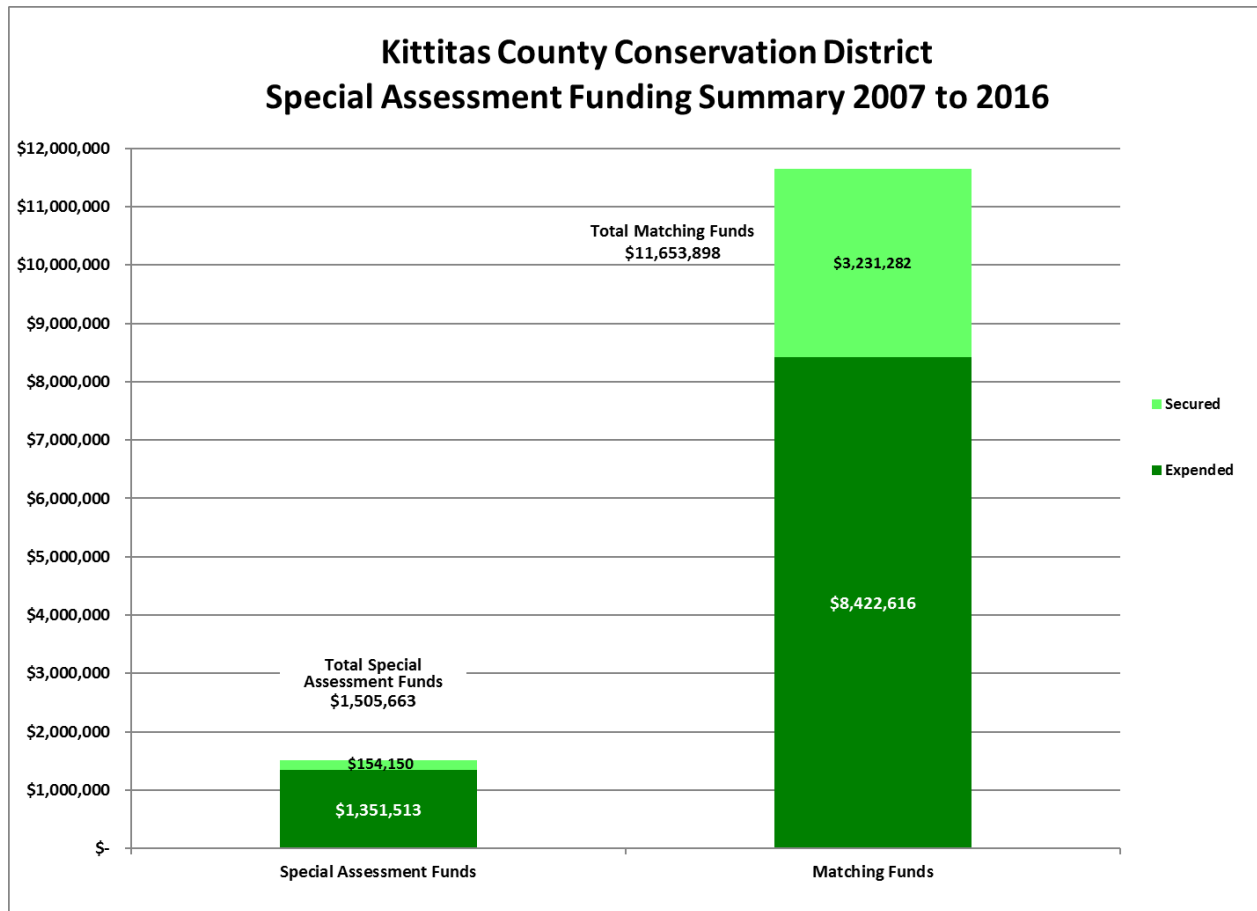


Figure 3 *Special Assessment Funds and Leveraged Funds*

### ***Grant Applications Submitted***

District staff continually research and apply for funds to implement projects and programs developed through landowner contacts and partnering efforts. In 2016, the following applications were submitted:

#### **Department of Ecology:**

**Yakima Basin Integrated Plan** – In 2016, District staff requested additional funding for the Reed Diversion Removal project on Manastash Creek due to increasing cost estimates for construction since the original project was contemplated. The Habitat Subcommittee authorized an additional \$200,000 in early 2016. When bids were received, the US Bureau of Reclamation and Department of Ecology worked together to provide another \$350,000 to the District for the project.

#### **Department of Natural Resources:**

District staff continued working with DNR staff to secure additional Forest Health funding and Forest Stewardship funding. In late 2015/early 2016, \$265,000 was secured for work with Firewise USA communities, fuels reduction projects and the roving chipper.

**Salmon Recovery Funding Board:**

KCCD submitted three proposals to the Salmon Recovery Funding Board in 2016 with a total request of \$351,402. First was a proposal requesting funding for engineering and design of a siphon at the Ellensburg Water Company intersection with Whiskey Creek. The second was a proposal for fish passage work at irrigation diversions on Parke Creek and Caribou Creek (the unfunded portion of the Parke/Caribou proposal in 2015). The third was a proposal to begin engineering and design work with the Cascade Irrigation District on four of their canal and creek intersections. None of the three projects were funded.

**Federal Emergency Management Administration – Washington EMD:**

In 2014, the Kittitas County Fire Marshal's office applied for funding and that application was approved for nearly \$250,000. A similar application was submitted in the next funding cycle, but due to delays in the decision-making process, no action was taken on the application until 2016. KCCD was notified that the second application was being funded as well. It is currently in the permitting and approval process.

**USDA Natural Resources Conservation Service:**

**Regional Conservation Partnership Program** - In cooperation with the Yakima Basin Integrated Plan (YBIP), and specifically the Yakama Nation, District staff worked with a large group of partners to submit a proposal for funding through the USDA Natural Resources Conservation Service's (NRCS) [Regional Conservation Partnership Program](#) (RCPP). This was the third application to RCPP for work in Kittitas County. The first round in 2014, the application was led by Ecology for off-reservation work in the basin and in the second round in 2015, the District was the applicant for work just in the upper Yakima watershed (Kittitas County). Neither were funded, so for the third round in 2016, the District partnered with the Yakama Nation who submitted a proposal to do work on their reservation and in the upper Yakima watershed. The proposal requested more than \$9 million for a 5-year project. In December 2016, NRCS offered an award of 80% of the requested amount. This equates to \$7,540,740, of which \$6,140,740 will be dedicated to projects in Kittitas County. NRCS programs included in this award are the Environmental Quality Incentives Program, the Agricultural Conservation Easement Program, the Conservation Stewardship Program, and the Healthy Forest Reserve Program.

**National Fish & Wildlife Foundation:**

The District worked with Trout Unlimited and the Washington Water Trust to apply to the National Fish & Wildlife Foundation. An application requesting \$149,944 to provide technical assistance to agricultural producers capable of implementing NRCS-based conservation practices that improve water quantity, water quality, and fish habitat conditions was submitted in September 2016. A pre-proposal was submitted in July and the project was selected to submit a full proposal. It was not selected for funding.

**PSE Foundation:**

The District worked with the Kittitas County Economic Development Group to submit another application to the PSE Foundation for emergency/disaster response planning. The application was funded for \$10,000.

## 2017 Rates & Charges Budget

The 2017 Budget for the new System of Rates & Charges is detailed below, adjusted for a slight difference in the estimated revenue.

**Table 3** Budget for 2017 for Funds Collected through System of Rates& Charges

Category	Description	Amount	Totals
<b>Special Assessment Collection Fee</b>	5% Collection fee paid to Kittitas County Treasurer	\$ 8,304	<b>\$ 8,304</b>
<b>Administration</b>	Administration of Local Funds including annual preparation of the tax rolls, and submission of annual reports & budgets to BOCC and public.	\$ 1,731	<b>\$ 1,731</b>
<b>District Operations</b>	This category includes funds to ensure continuity in basic District operations. This includes staff time for financial reporting, regular and special meetings, creation and maintenance of long range and annual plans, and other staff costs as necessary. In addition, this category includes costs associated with District office facilities.	\$ 22,570	<b>\$ 22,570</b>
<b>Educational Assistance</b>	<b>Youth Education Opportunities</b> – Coordination of the Ag Appreciation Day (previously coordinated by WSU Extension); Water on Wheels and Wheat Week Curriculum (provided by Franklin Conservation District); and exploration of the Kids in the Creek style event in Kittitas County.	\$ 1,538	<b>\$ 15,144</b>
	<b>Producer Workshops</b> - Attendance as requested at local meetings including Kittitas County Hay Growers & Suppliers, Kittitas County Farm Bureau, Kittitas County Cattlemen, fertilizer/chemical dealer annual grower meetings, irrigation district/company annual meetings, etc.	\$ 817	
	<b>Public Outreach</b> - One newsletter per year sent to all rural routes and Cle Elum (approximately 10,000 local residents and landowners). This newsletter will be supplemented by regular electronic newsletters with information about district programs and programs or news from other agencies (e.g. Noxious Weed Control Board, Department of Natural Resources, Natural Resources Conservation Service, etc.) that affect private lands. The District website will be regularly updated to contain technical assistance and information about various funding programs.	\$ 12,789	
<b>Technical Assistance</b>	<b>Water</b> - Direct technical assistance to landowners and land managers to plan, design, fund and implement practices (both on-the-ground and management) that improve water use efficiencies and instream flow and/or water quality. This includes both one-on-one assistance for specific projects (e.g. PAM Cost Share and Small Project Cost Share) and participation in larger group efforts coordinating the efforts to address water related issues throughout the District (e.g. Yakima Basin Integrated Plan, Upper Yakima Temperature TMDL, and the Lower Kittitas Valley Temperature Reduction Work Group).	\$ 14,279	<b>\$ 48,133</b>

	<p><b>Fish &amp; Wildlife</b> - Direct technical assistance to landowners and land managers to plan, design, fund and implement practices (both on-the-ground and management) that improve habitat conditions for fish and wildlife. This includes one-on-one assistance for specific projects as well as assistance with facilitation of larger planning efforts (e.g. Teanaway CRM, Yakima Basin Integrated Plan, etc.).</p>	\$ 14,399	
	<p><b>Forestry</b> - Direct technical assistance to landowners and communities to plan, design, fund and implement practices (both on-the-ground and management) that reduce risks related to fire danger in the urban/wildland interface and improve forest health. Activities include risk assessments and recommendations to reduce risk and protect homes and property; updating/maintaining County Wide Fire Protection Plan; achieving and maintaining Firewise USA and Fire Adapted Communities designations; participation in the Fire Adapted Communities Learning Network; and work with non-governmental, local, state and federal partners.</p>	\$ 14,230	
	<p><b>All Resource Concerns</b> - Ensuring presence of USDA Service Center (Farm Service Agency and Natural Resources Conservation Service) in Kittitas County to provide access to Farm Bill programs addressing soil, water, fish &amp; wildlife habitat and forestry.</p>	\$ 5,225	
<b>Financial Assistance</b>	<p><b>Water</b> - PAM Cost Share and Small Project Cost Share</p>	\$ 20,962	<b>\$ 53,655</b>
	<p><b>Fish &amp; Wildlife</b> - Cost share to assist with implementation of priority activities identified in the Teanaway Grazing CRM.</p>	\$ 13,462	
	<p><b>Forestry</b> - Cost share for landowners and communities implementing fuels reduction projects and forest health projects in priority areas.</p>	\$ 19,231	
<b>Contingency Funds</b>	Contingency Funds	\$ 16,539	<b>\$ 16,539</b>

<b>Total</b>			<b>\$166,075</b>
--------------	--	--	------------------