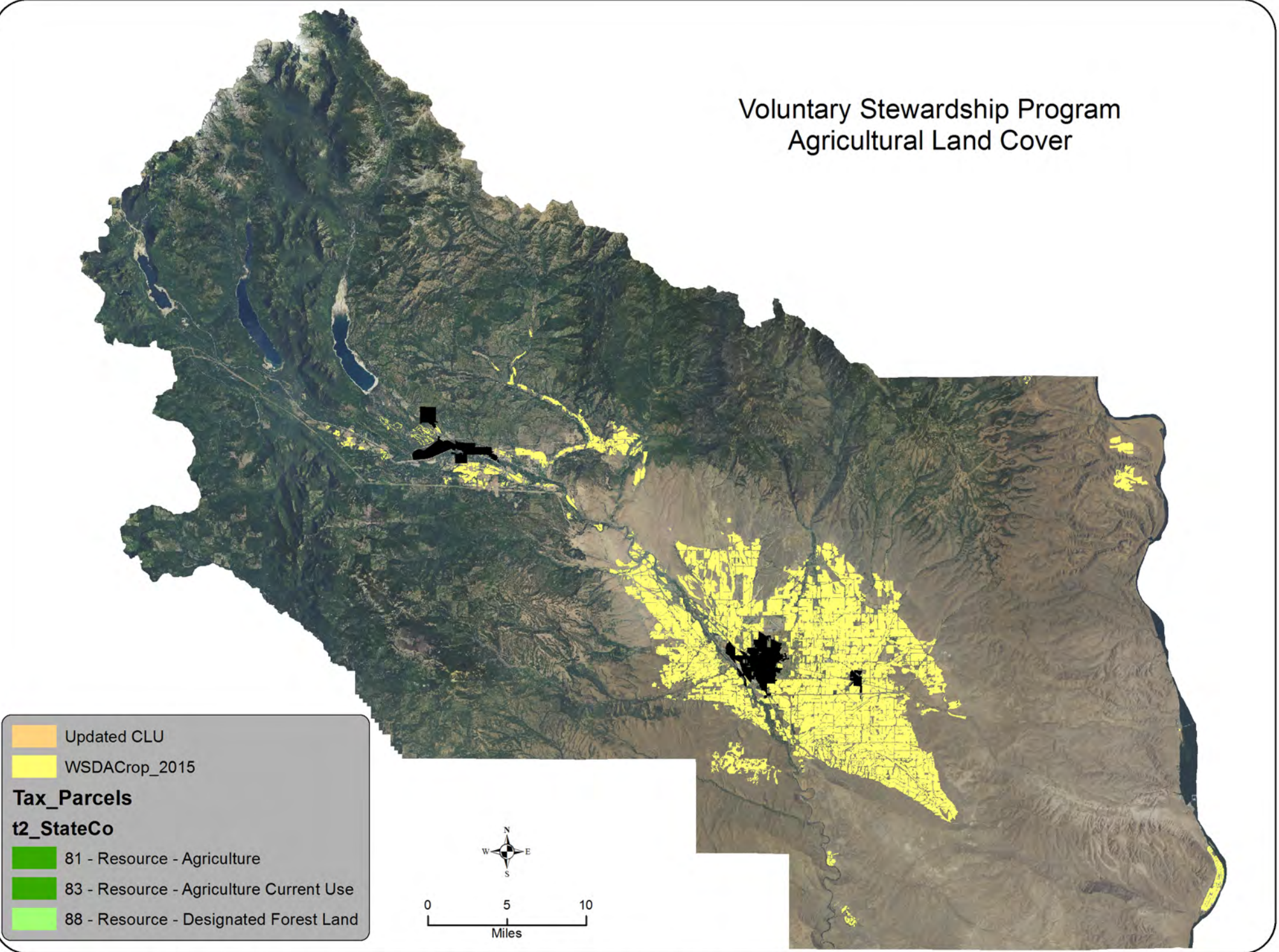


Voluntary Stewardship Program Agricultural Land Cover

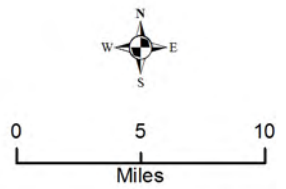


- Updated CLU
- WSDACrop_2015

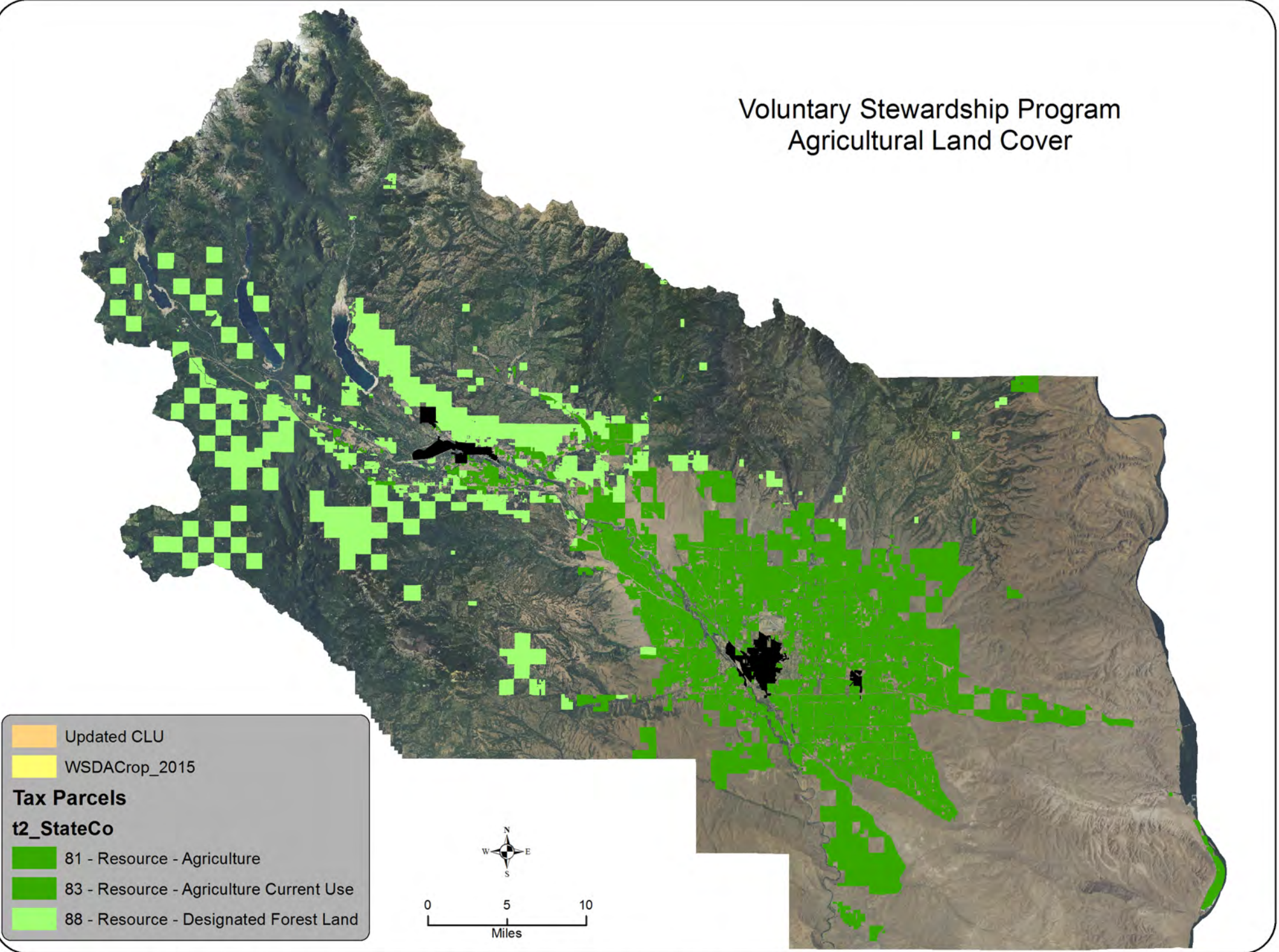
Tax_Parcels

t2_StateCo

- 81 - Resource - Agriculture
- 83 - Resource - Agriculture Current Use
- 88 - Resource - Designated Forest Land



Voluntary Stewardship Program Agricultural Land Cover



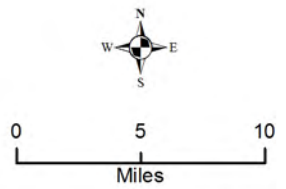
Updated CLU

WSDACrop_2015

Tax Parcels

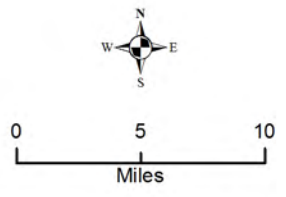
t2_StateCo

- 81 - Resource - Agriculture
- 83 - Resource - Agriculture Current Use
- 88 - Resource - Designated Forest Land



Voluntary Stewardship Program Agricultural Land Cover

KittitasCountyAgCover



This data is provided "as is" without warranty of any kind. Further, the Kittitas County Conservation District does not warrant, guarantee, or make any representations regarding the use of, or results from the use of the data in terms of correctness, accuracy, reliability, currentness, or otherwise. Hydrology layer is in draft form. Parcel layer was obtained from the Kittitas County Assessor and is not survey quality. Produced by the Kittitas County Conservation District on 3/29/2017